

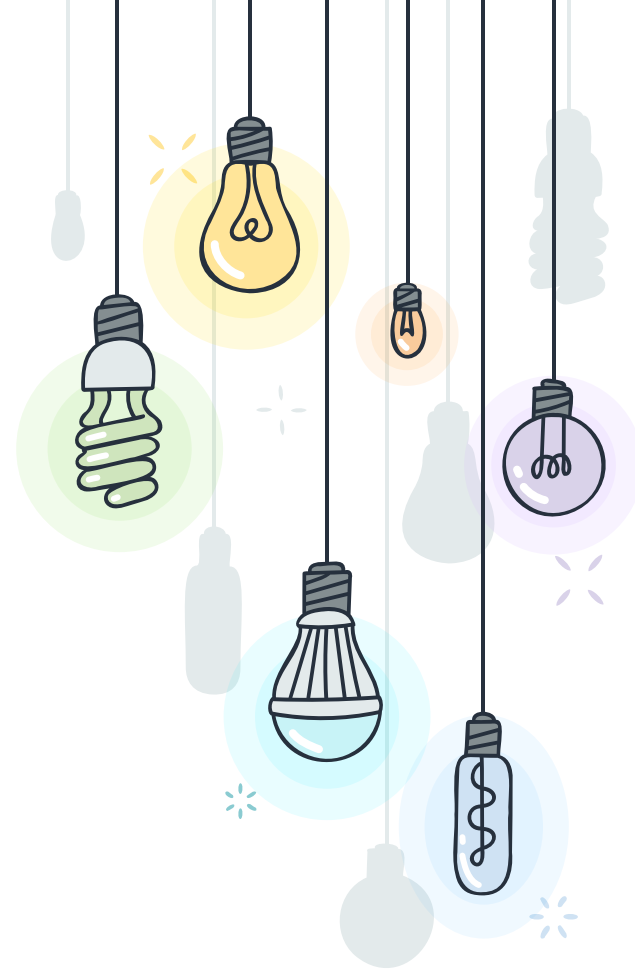
The background is a solid light green color. It is decorated with several hanging light bulbs of various shapes and colors (yellow, blue, purple, white) and some starburst or spark-like symbols. The bulbs are suspended by thin black lines. Some bulbs are glowing with a soft light, while others are just outlines or shadows. The starbursts are small, multi-pointed shapes in white and yellow.

Charlotte Wood Middle School Incoming 6th Grade Information

Bridget Vorhees, Principal
Garrett Fitch, Assistant Principal

School Wide Commitment

- ❑ Our community works collaboratively to provide the support and structure necessary for all students to achieve high levels of learning.
- ❑ Create and maintain a safe school environment for all
- ❑ Provide an outstanding education



Expectations: Be your BEST!



Academically

Try your
hardest!

Socially

Be kind!

Behaviorally

Make good
choices!



Daily Life at CW

Core

AM (Periods 1,2,3) or
PM (Periods 5,6,7)

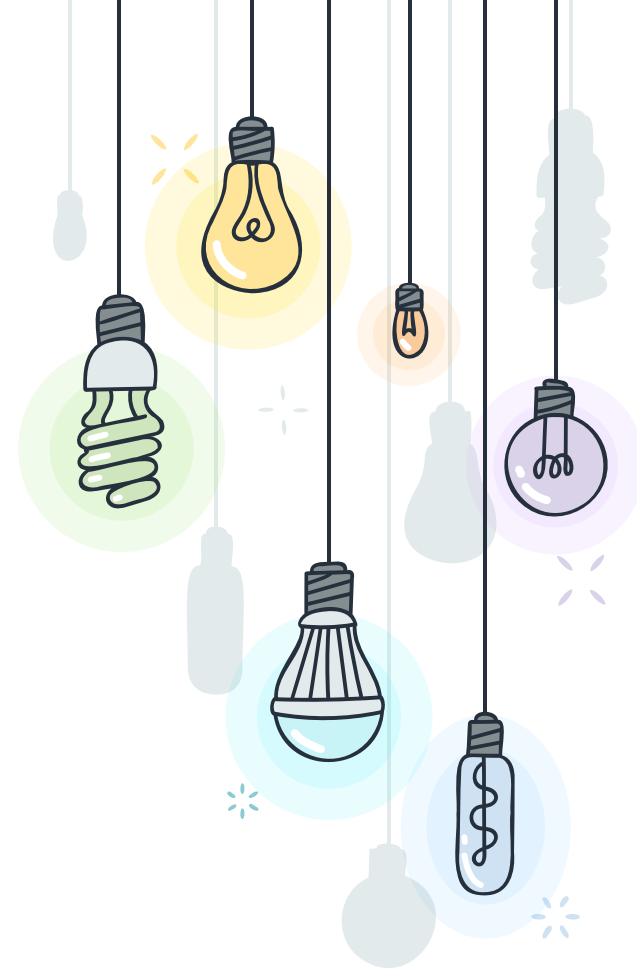
Science

Math

PE

Elective

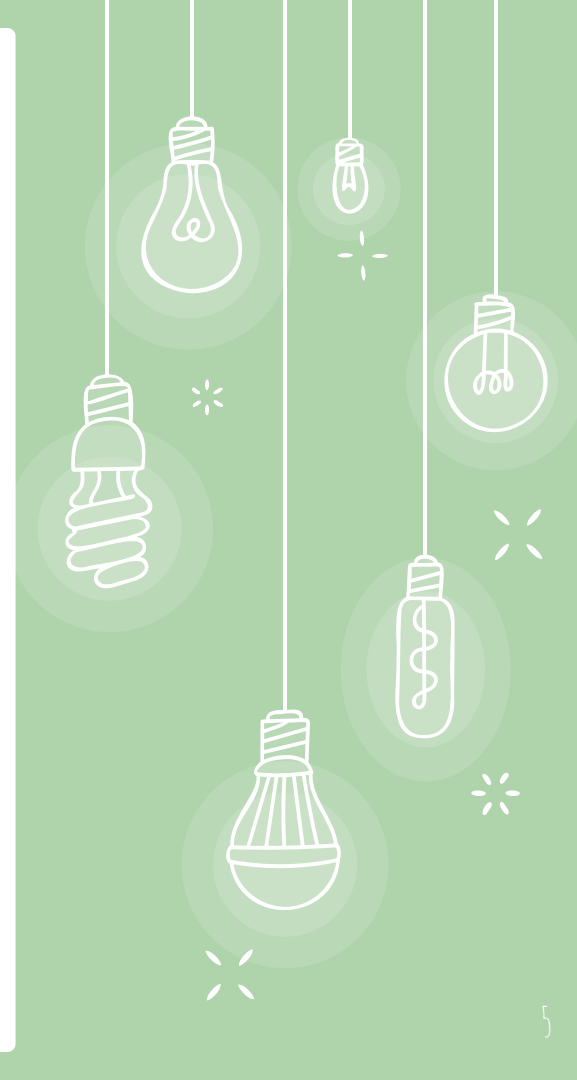
- Wheel
- Chorus (year)
- Instrumental Music (year)
- Resource
- Academic Support



6th Grade Core

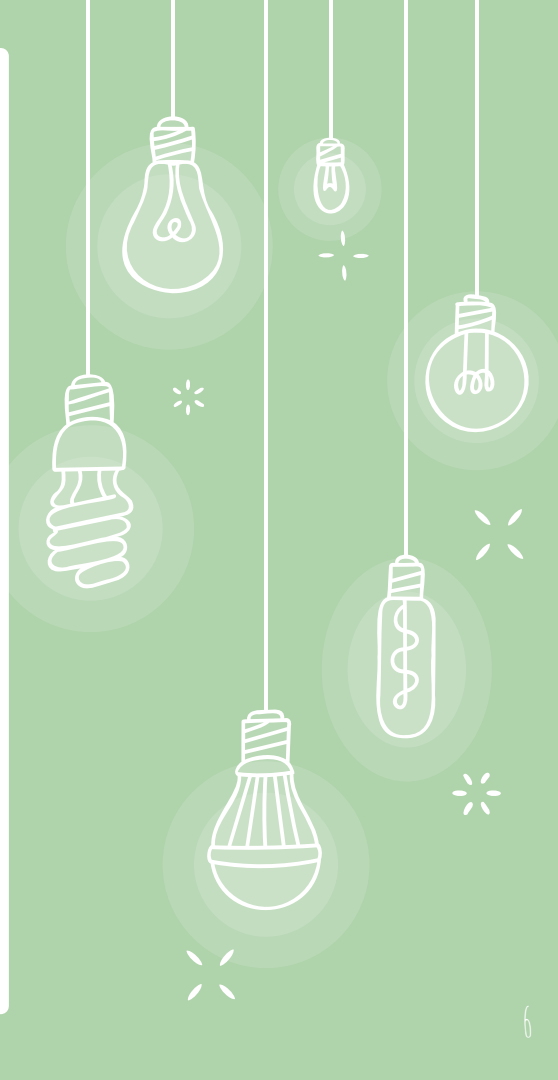
Three periods of Reading, Writing, and Social Studies. Students spend the majority of their day with their core teacher.

1. Reading: Students read a wide variety of literature in a variety of ways. Students read on their own, in partnerships and in book clubs, and with their class. Through these reading experiences teachers cover the common core standards for 6th grade.
2. Language arts includes writing strategies, grammar, and spelling. Students write daily in all genres including narrative, argument, and information. They will write poems, essays, and in some classes they will write multiple chapter books.
3. Social Studies is focused on ancient civilizations. We begin with early man and the dawning of civilization. Then we move through ancient civilizations such Egypt, India, China, Greece, and Rome. Social Studies is a 6th grade favorite!



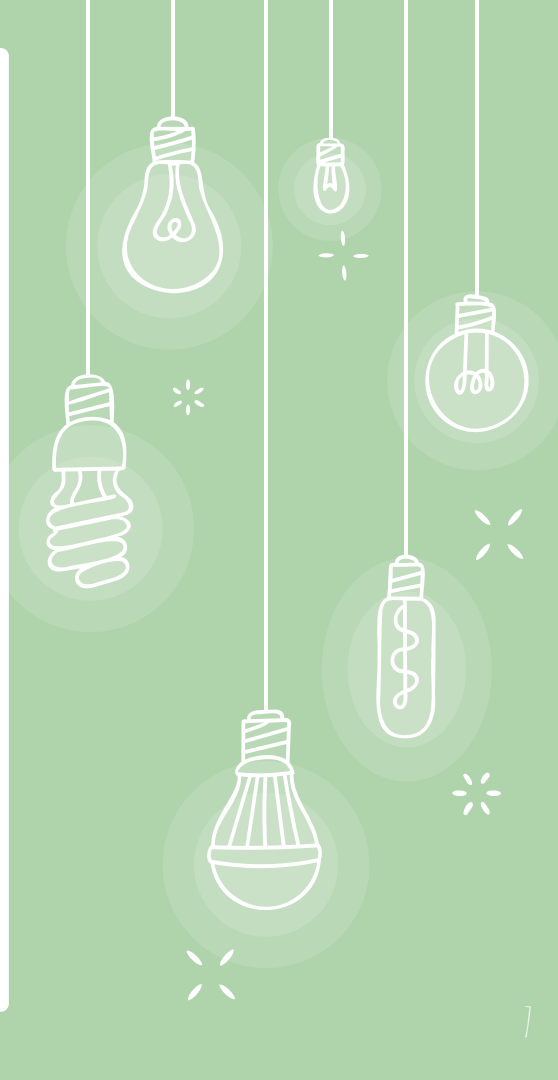
6th Grade Science

All 6th grade students get to have a period of science during their busy school day. Ms. Holden and Mr. Swenson are so excited to share the newest curriculum being designed for our future science leaders. We follow the Next Generation Science Standards as adopted by our district several years ago. We both love what we do and are ready to share this enthusiasm in a nurturing and challenging environment.



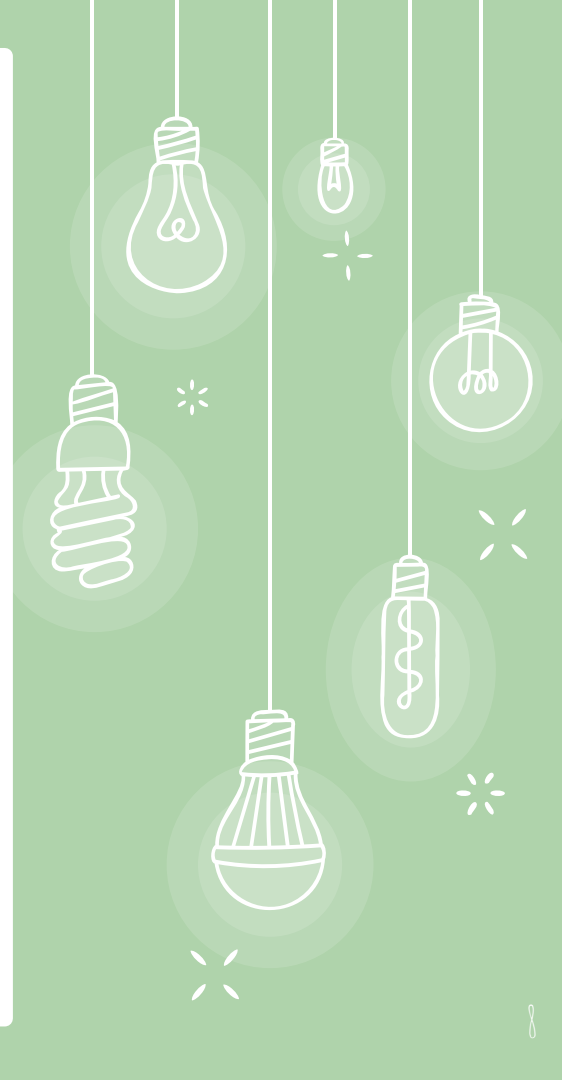
Course 1 Math

In Course 1, we use the district adopted Springboard Math curriculum. We have daily homework and we create an Interactive notebook for notetaking and examples. We begin with the foundation skills-decimals and fractions, then to Pre-Algebra skills which includes expression, equations, and inequalities, followed by ratios and percents and ends with Geometry.



6th Grade PE

Charlotte Wood practices a fitness-based youth development program. Our program uses sport to facilitate learning in our students, but the focus of our program is helping our students understand how their bodies work and what it takes to maintain a healthy lifestyle. This helps create opportunities for our students to connect to others, develop skills, and use those skills in their daily lives. This, in turn, increases their ability to succeed. Student will be introduced to a variety of sports and outdoor activities, which we hope will ignite a life-long love of being active. It is our goal at Charlotte Wood to have all our students understand the importance of a healthy lifestyle, both physically and mentally, and we strive to give enough opportunities for all our students to explore the many ways to stay active.



6th Grade Electives

Exploratory Wheel: Try a variety of electives for a 4-6 week snapshot of the year long version.

- Drama, Foods, Chorus, Music Appreciation, Video, and Art

Chorus:

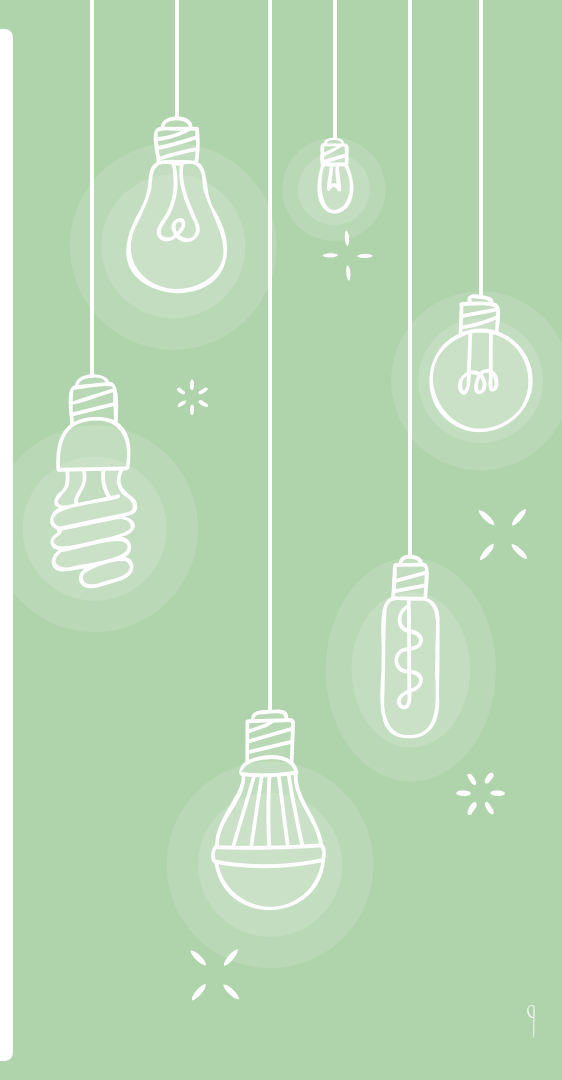
- Year long class

Instrumental Music:

- String Orchestra (for beginners)
- Cadet Band (for beginners)
- Symphonic Band

Academic Electives:

- Resource
- Math or Reading Support



Our Counselors



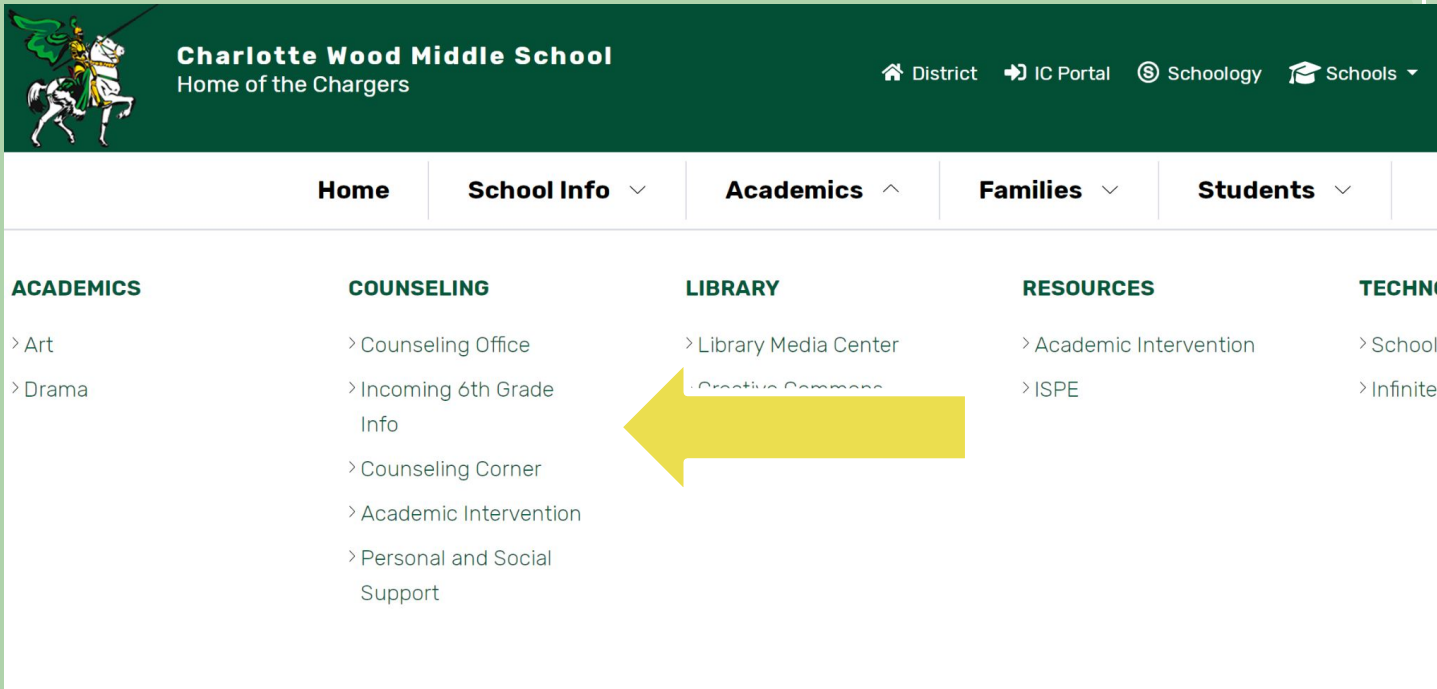
Tara
Rodrigues
A-Lee



Katie Shepherd
Lei-Z



Stay connected with us through our Counseling Corner!



The image shows the top portion of the Charlotte Wood Middle School website. The header is dark green with a logo of a knight on a horse on the left. To the right of the logo is the school's name and tagline. Further right are links to the District, IC Portal, Schoology, and Schools. Below the header is a white navigation bar with links to Home, School Info, Academics, Families, and Students. Below this is a grid of five categories: ACADEMICS, COUNSELING, LIBRARY, RESOURCES, and TECHNOLOGY. Each category has a list of sub-links. A large yellow arrow points from the LIBRARY section towards the COUNSELING section, specifically highlighting the 'Counseling Corner' link.

Charlotte Wood Middle School
Home of the Chargers

[District](#) [IC Portal](#) [Schoology](#) [Schools](#)

[Home](#) [School Info](#) [Academics](#) [Families](#) [Students](#)

ACADEMICS	COUNSELING	LIBRARY	RESOURCES	TECHNOLOGY
<ul style="list-style-type: none">> Art> Drama	<ul style="list-style-type: none">> Counseling Office> Incoming 6th Grade Info> Counseling Corner> Academic Intervention> Personal and Social Support	<ul style="list-style-type: none">> Library Media Center> Creative Commons	<ul style="list-style-type: none">> Academic Intervention> ISPE	<ul style="list-style-type: none">> School of the Future> Infinite Campus

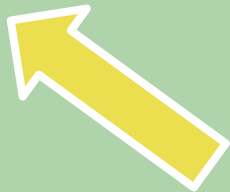
Incoming 6th Grade Info

INCOMING 6TH GRADE PARENT NIGHT

The Incoming 6th Grade Parent Information Night will be held on Thursday, February 16 @ 6 pm. Parents of incoming 6th grade students are invited to attend this session where Charlotte Wood counselors will discuss middle school curriculum, course selection and other FAQs. To attend this Zoom meeting, please register using this registration link and you will be sent an email with the Zoom meeting link.

ONLINE ELECTIVE REGISTRATION FOR 2023-24 SCHOOL YEAR

Incoming 6th Grade students are scheduled for one (1) elective class. Students must complete and submit their class selection GOOGLE FORM no later than Friday, February 24, 2023. Sixth grade students will choose from 6 elective classes in

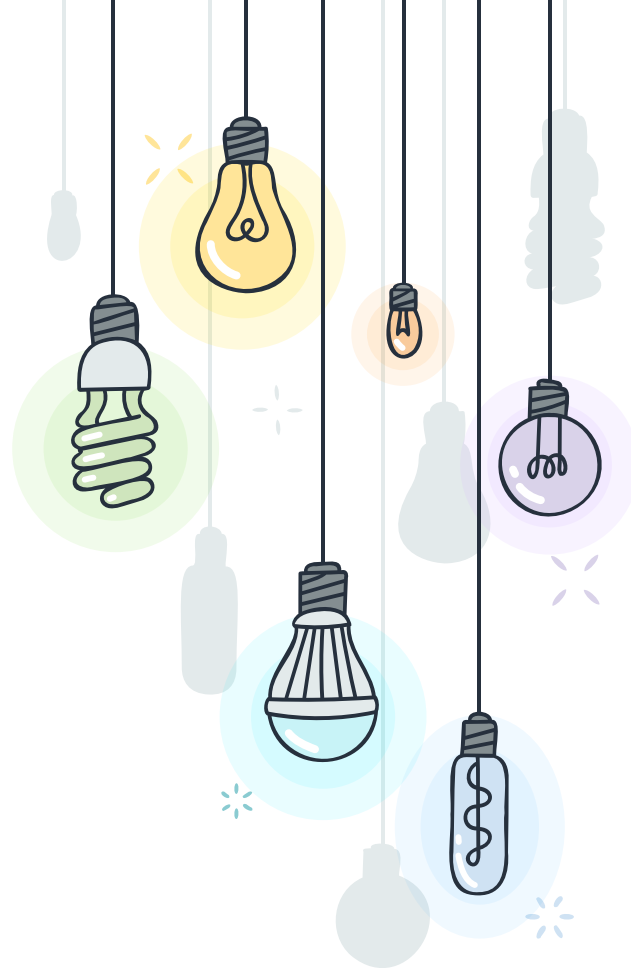


Be sure to complete this google form to choose your student's elective by February 24



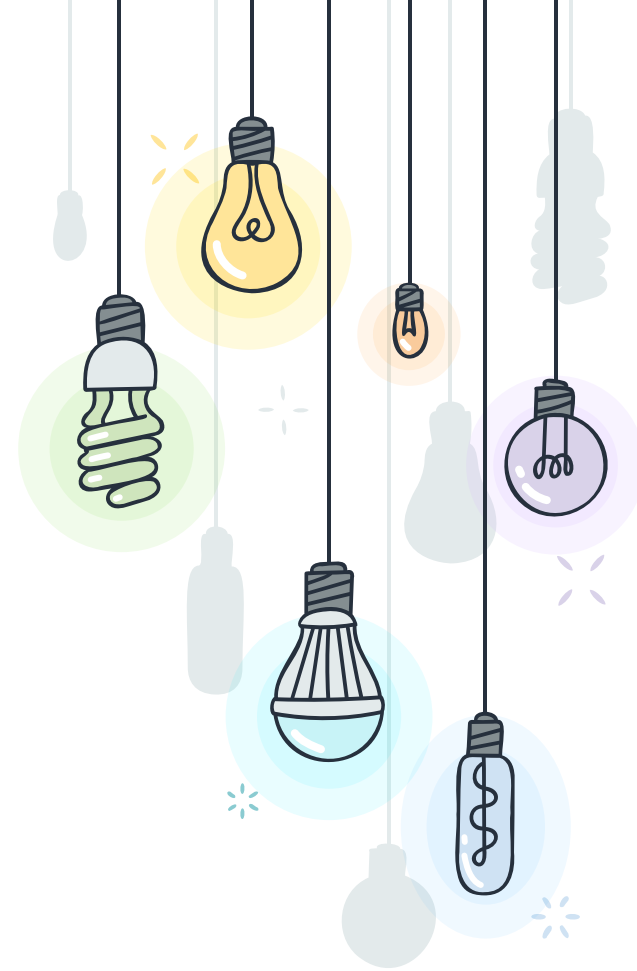
Advisory

- ❑ Good intervention is prevention
- ❑ Advisory
 - ❑ Built into the school day
 - ❑ Students will attend where needed
 - ❑ Teachers can assign
 - ❑ Students can decide



Student Involvement

- ❑ Leadership Spirit Days
- ❑ School Dances
- ❑ Talent Show
- ❑ School Performances
- ❑ After School Sports
- ❑ Charger Camp



Tools for Success



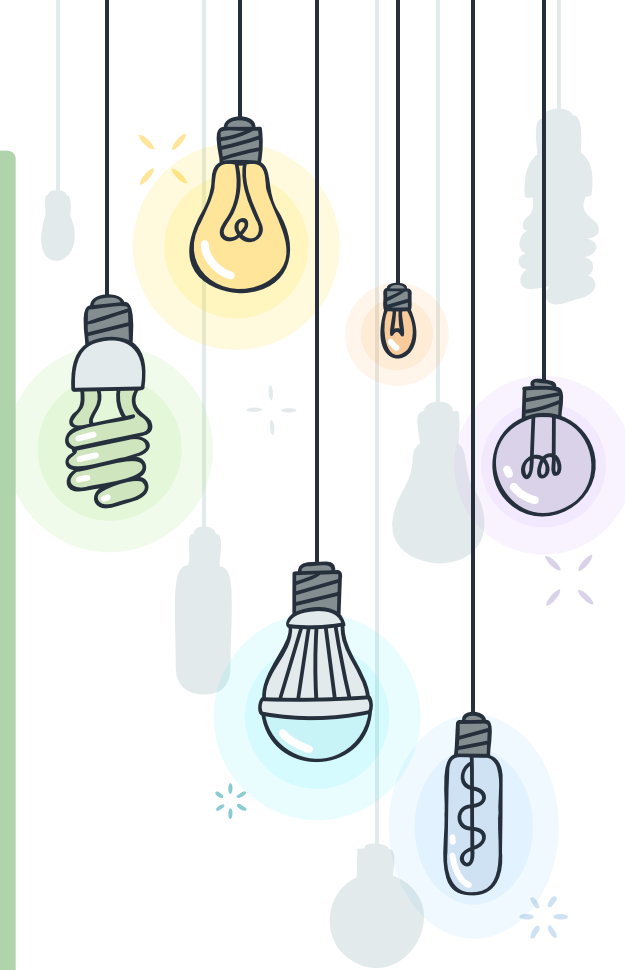
Organization

- ❑ CWMS Planner
- ❑ Homework Folder

New Learning Management System

- ❑ Access to Student Information
- ❑ Daily Assignments
- ❑ Updated Grades
- ❑ Progress Report
- ❑ Communicate with Teachers & Counselors

Advisory Period



Welcome Charger Families!!

PTA

Stephanie Brener-Harvill
Tina Nishino
Jenny Powell-Haynes

What does PTA do at Charlotte Wood?

CHARGER CONNECTIONS

- Parent Coffee Meetups
- Virtual Happy Hour Chats
- Online Directory
- Charger Check-ins w/ CWMS Staff
- Family Engagement Events
- Grade Level Community-Building Events

COMMUNICATION

- CWMS PTA Facebook & Instagram
- Charger Weekly Newsletter
- CW PTA Website

STAFF SUPPORT

- Staff Appreciation
- Teacher Supplies
- Staff Development Grants

PTA PROGRAMS

- Exceptional Education
- Inclusion, Diversity & Equity
- Health & Wellness
- Legislative Advocacy
- Sister School

ACTIVITIES

- Charger Camp Support
- Online Registration
- Parent & Student Education
- Reflections Art Program
- Charger Spirit Wear
- Run for Education Support
- 8th Grade Promotion Recognition
- Super Chargers (Community Service)
- Odyssey of the Mind

**Charlotte Wood
Middle School**



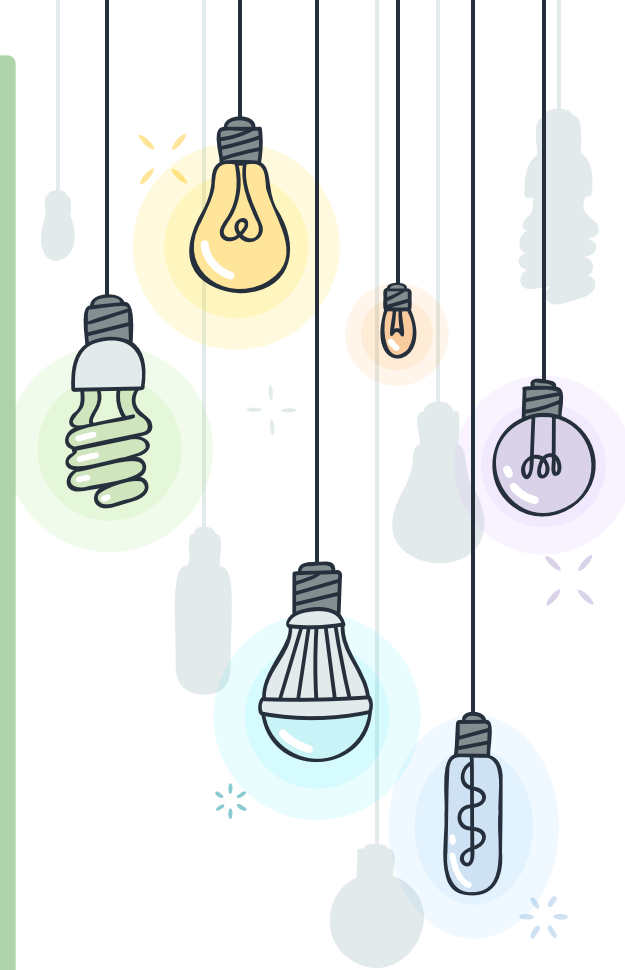
Join the 2023-24 Charlotte Wood PTA Board and help support students, teachers, parents, and staff!



Committee openings available for the 2022-23 school year:

- Health and Wellness
- Inclusion, Diversity & Equity
- Legislative Advocacy
- Family Engagement (Parent Education)
- Exceptional Education (Special Needs/GATE)
- Sister School Liaison
- Charger Spirit Wear
- Charger Camp Committee (New Student Orientation in partnership with Student Leadership Class)
- Run for Education Liaison
- Reflections Art
- Super Chargers Co-Coordinator (Student service group)
- 8th Grade Promotion Party & Promotion Committee

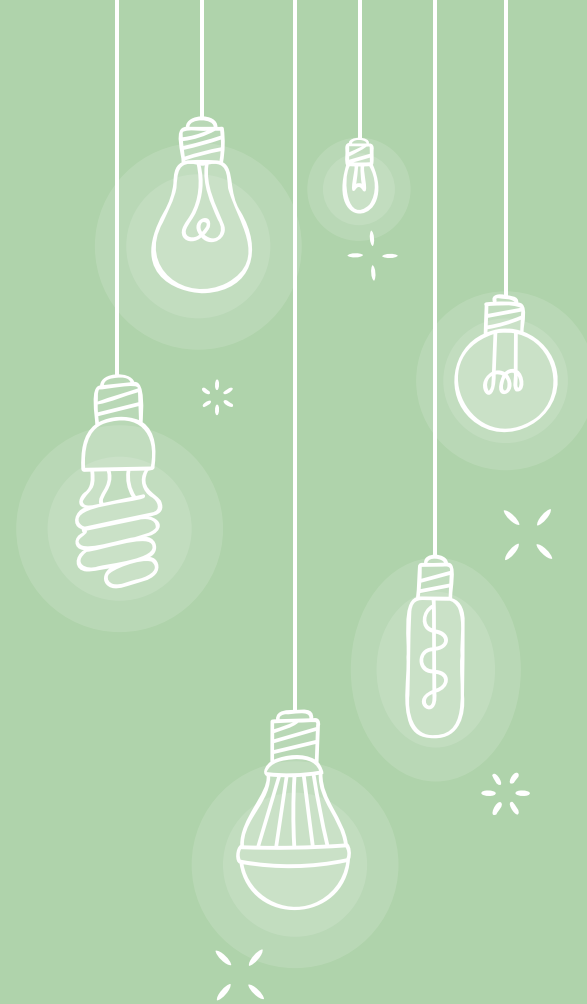
*Training is provided. To volunteer or to find out more information,
please contact Jenny Powell Haynes,
programs@charlottewoodpta.org*



New Family Welcome Guide

We asked parents and students *What do you wish you knew when you started at Charlotte Wood?* and here are their answers:

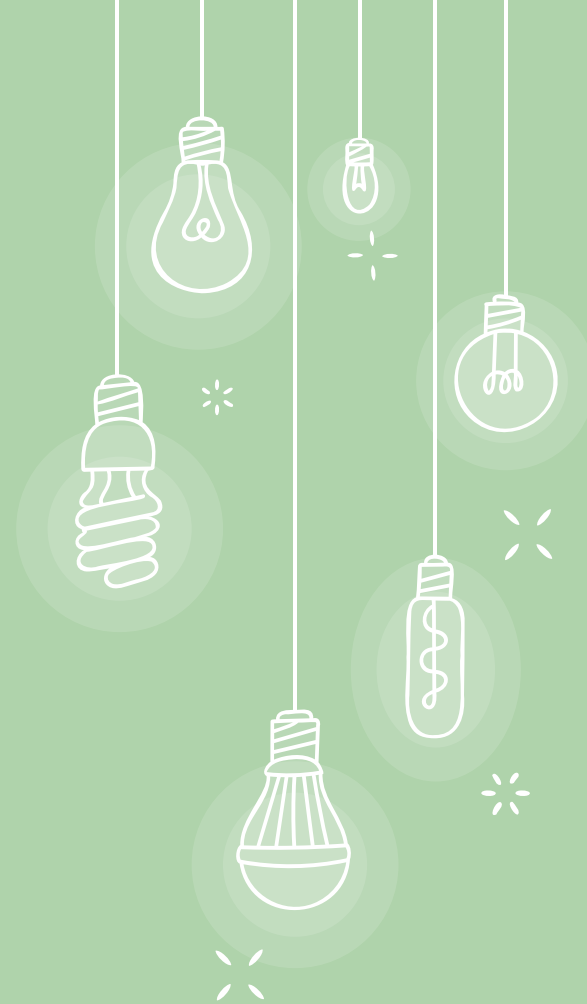
[Guide for New Charlotte Wood Families.](#)



Membership

Your membership is the main support for the work that PTA does. With the exception of spirit wear, we don't really do fundraiser events.

Please consider joining Charlotte Wood PTA during Online Registration
- Thank You!



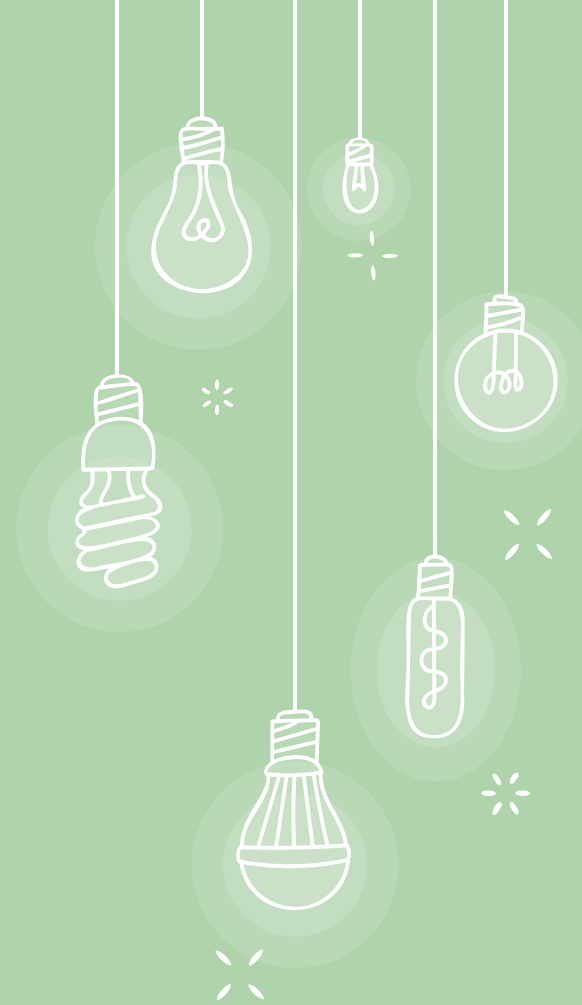
Stay Connected

Sign up for the Charger Weekly -
Charlotte Wood's Sunday Newsletter
with all that is happening at school!
[Charger Weekly Signup](#)

Follow us!

Facebook: [Charlotte Wood PTA](#)

Instagram: [Charlotte Wood PTA](#)



Charger Education Fund

Tina Nishino – Charger Fund President 2022-23

President@CWMSChargerFund.org

What is Charger Fund?

- ❑ Pays for programs and services that support and enhance the educational experience of ALL students at Charlotte Wood MS
 - ❑ Class Size Reduction
 - ❑ Technology
 - ❑ After School Homework Hour, Noon Duty Supervisor, Student Activity Scholarships
- ❑ Funded by Parent Donations – NO Auctions, Fun Runs, Carnivals, Wrapping Paper Sales
- ❑ Main campaign during August Online Registration



Class Size Reduction

- ➔ *Reduced class size by adding classes & teachers*
 - ❑ 6th and 7th grade Core
 - ❑ 8th grade English & History
 - ❑ Math
 - ❑ Science
- ➔ *More classes & teachers = better learning*

Done by paying for SECTIONS

- 1 Section = 1 class period added to the master class schedule
- 2022-23 Sections = \$20, 954/section
- Largest percentage of Charger Fund expenses



Technology

Examples of Technology Support

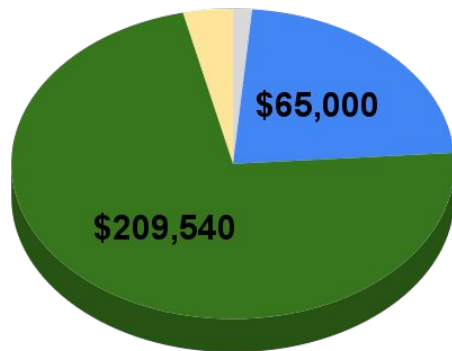
- ❑ *Software subscriptions*
- ❑ *Printers*
- ❑ *Macs & Macbooks*
- ❑ *Doc Cameras*
- ❑ *Classroom Projectors*
- ❑ *Updated equipment for Tech Lab
(Robotics class) and Video
Production Lab*



Charger Fund by Numbers

2022-23 Budgeted Expenses:

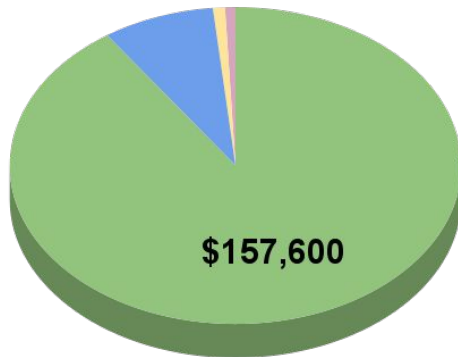
- 10 Sections = \$209,540
- Tech Refresh = \$65,000
- Other Programs = \$10,500
- Admin = \$4,000
- **TOTAL = \$289,040**



● Admin ● Tech Refresh ● Sections ● Other Programs

2022-23 YTD Income:

- Parent Donations = \$157,600
 - 99% to Goal
- Corporate Match = \$14,000
 - 67% to Goal
- Sponsors = \$1,500
- Misc. Donations = \$1,300
- **TOTAL = \$174,400**



● Parent Donations ● Corporate Match ● Sponsors ● Misc. Donations

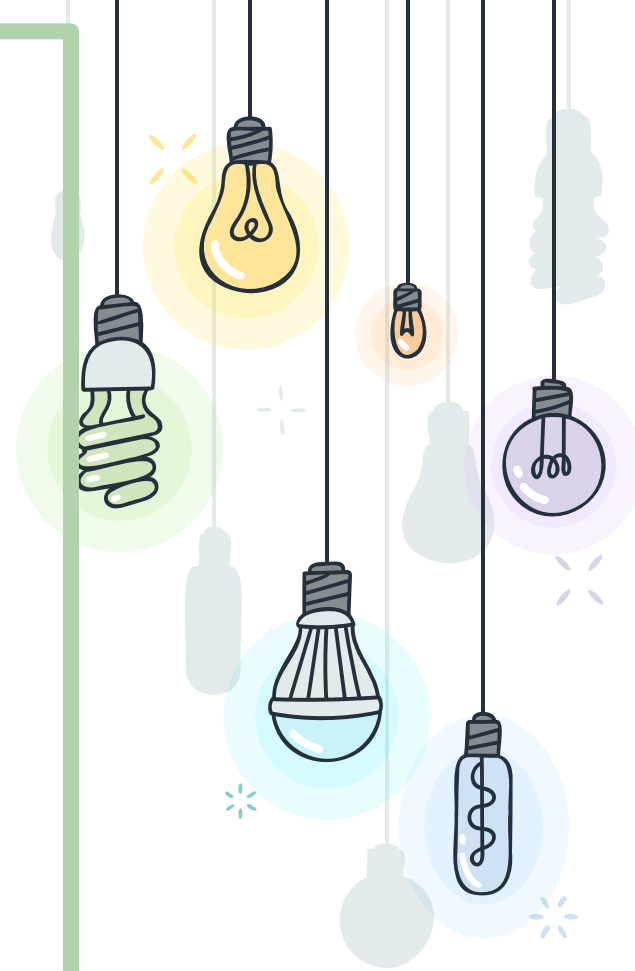
Wow!
That's a big difference!

2023-24



- Cost per Section increasing to \$21,590
- Donations are decreasing
- Reserves are being depleted

*Charger Fund is only able to fund 9 Sections
Down from 11 Sections this year*



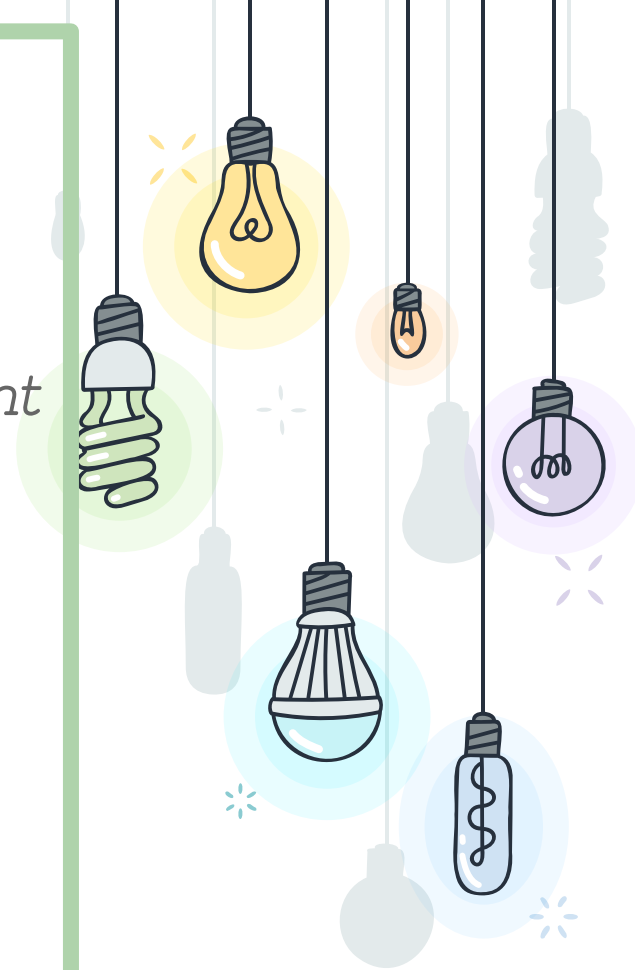
So how can YOU help?

 *GOAL – 100% family participation*

2023-24 suggested donation = \$450 per student
SPRING CAMPAIGN = \$425 per student

- ☐ *Installment plan*
- ☐ *Any amount is appreciated*
- ☐ *Donations done during registration in August through Future Fund's STORE*

Your donation is 100% tax deductible!

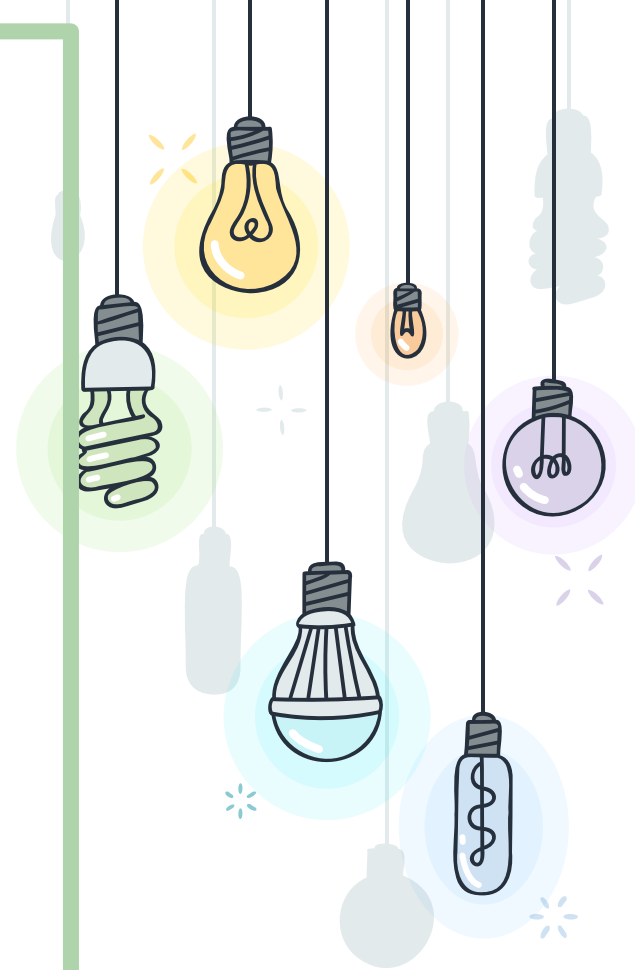


So how can YOU help?



- *Corporate Match*
- *Sponsorship Program*
- *Join the Charger Fund Board!*

THANK YOU!



The Ask



Our goal is to support 11 sections for 2022-23. We cannot reach our goal without your support! Please help us reach our goal

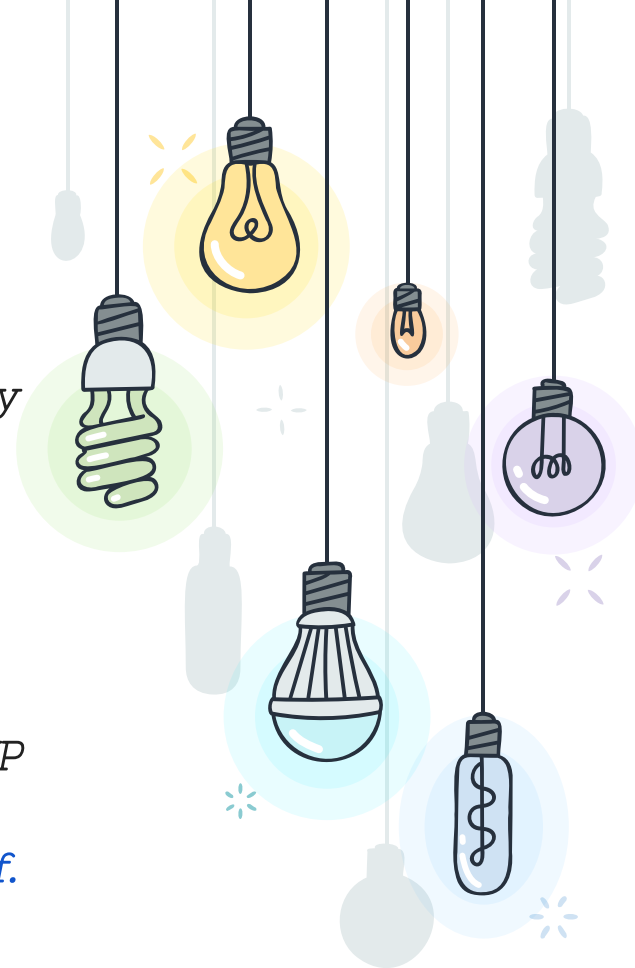
Does your company offer Corporate Matching?

Do you want to know more about what is going on at Charlotte Wood ?

We are looking for some amazing volunteers for the following board positions:

- *President*
- *Treasurer*
- *Financial Secretary*
- *Recording Secretary*
- *Auditor*
- *Communications*

Please contact Tina Nishino, Charger Fund EVP at CWChargerFundVP@srvef.org for questions or interest.



How to Donate

- ❑ *Online Registration software (Future Fund Store)*
Use the link in the Charger Weekly
- ❑ *Mail or drop off checks at the Charlotte Wood Middle School Office*

www.cwms.schoolloop.com/cwmschargerfund

Thank
you!!!



See you all
in the
Fall!!!